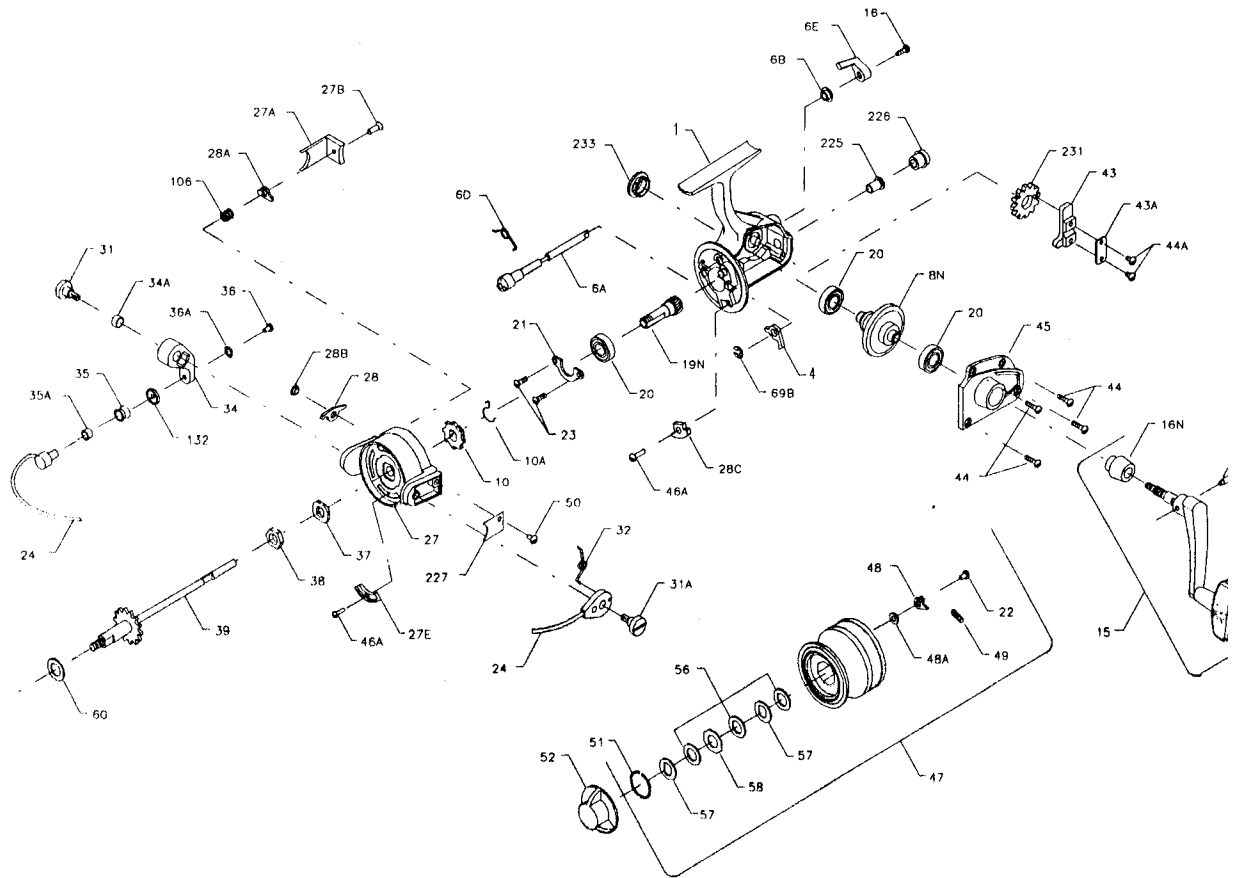




PARTS AND PRICE LIST FOR MODEL 5500SS



Key No.	Part No.	Description	Price	Key No.	Part No.	Description	Price
1	001P5500	Housing	\$9.50	35	035 704	Line Roller	\$3.70
4	*004N4400	Dog	2.00	35A	035A704	Line Roller Bushing	.45
6A	006A450	Eccentric	2.50	36	036 750	Bail Stud Screw	.65
6B	006B750	Eccentric Liner	.45	36A	036A750	Lock Washer	.45
6D	006D710	Eccentric Spring	.45	37	037 450	Rotor Washer	.55
6E	006E750	Eccentric Lever	1.00	38	038 550	Rotor Nut	.50
8N	008N5500	Main Gear	12.60	39	039N5500	Spool Shaft	5.50
10	*010N4400	Ratchet	2.50	43	043N5500	Crosswind Block	2.05
10A	*230N5500	Anti Reverse Spring	.60	43A	043A550	Crosswind Block Plate	.50
15	015 5500	Handle (Complete)	14.75	44	044 704	Cover Screw (4 req.)	.45
15	015C650	Handle Pivot Screw	.55	44A	022 750	Crosswind Block Screw (2 req.)	.45
16	016 910	Eccentric Screw	.50	45	045 5500	Housing Cover	4.00
16N	016 5500	Handle Collar	1.75	46A	046A704	Screw (2 req.)	.45
19A	019A550	Pinion Spacer	.80	47	047 5500	Spool (Complete)	22.80
19N	019N5500	Pinion	5.75	48	048 750	Click Tongue	.50
20	020 722	Ball Bearing	12.00	48A	048A750	Click Tongue Washer	.45
21	021 450	Bearing Cover	1.00	49	049 710	Click Tongue Spring	.50
22	022 750	Spool Click Screw	.45	50	050 712	Bail Spring Cover Screw	.50
23	023 750	Bearing Cover Screw (2 req.)	.45	51	051 710	Retaining Ring	.50
24	024 5500	Bail Wire	8.80	52	052 550	Drag Knob	5.05
27	027 5500	Rotor	6.00	56	056 710	Drag Washer-HT100 (3 req.)	.80
27A	027A5500	Bail Trip Cover	1.25	57	057 710	Metal Keyed Washer (2 req.)	.45
27B	027B420	Rotor End Screw	.55	58	058 710	Metal Washer (Octagon)	.45
27E	027E5500	Balance Weight	1.50	60	060 550	Thrust Washer (Teflon)	.60
28	028 5500	Trip Lever	1.70	69B	*069B4400	Retaining Ring	.90
28A	028A440	Cam Lever	1.25	106	106 5500	Rotor End Spring	.55
28B	028B5500	Trip Lever Bushing	.90	132	132 450	Roller Washer	.90
28C	028C440	Trip Cam	.90	225	225 5500	Crosswind Shaft Bushing	1.25
31	031 550	Bail Arm Screw	1.00	226	226 5500	Bushing Cap Screw	1.15
31A	031A450	Trip Arm Screw	1.00	227	227 440	Bail Spring Cover	.50
32	032 440	Bail Spring	.90	231	231N5500	Crosswind Gear	3.50
34	034 450	Bail Arm	2.75	233	233 440	Bearing Cover	2.25
34A	034A550	Bail Arm Bushing	.45	**	**300 5500	Power Handle	15.50

*These parts will only work on reels which already have a slot in the dog post to accept retaining ring.

** Not Shown